

# CSJE Centre for Social Justice and Equity



## Madras School of Social Work QUARTERLY REPORT

2023/ 24



### ABSTRACT

Adi Dravidar and Tribal Welfare Department – Prevention of Atrocities – Announcement made by Hon'ble Minister for Adi Dravidar Welfare – Establishment of Centre for Social Justice and Equity (CSJE) at Madras School of Social Work - Rs.1,59,43,000/- sanctioned - Orders – Issued.

### ADI DRAVIDAR AND TRIBAL WELFARE (PA2) DEPARTMENT

G.O.(MS.)No.87

Dated:12.07.2023

சேபகிரகு ஆணி 27-ஆம் நாள்

திரவாள்ரவர ஆண்டு 2054



**“A just society is that society in which ascending sense of reverence and descending sense of contempt is dissolved into the creation of a compassionate society”**



# CONTENTS

<b>Foreword from Principal</b>	<b>01</b>
<b>Acknowledgement</b>	<b>02</b>
<b>Executive Summary</b>	<b>03</b>
<b>Our Mission and Values</b>	<b>04</b>
<b>How we Work</b>	<b>05</b>
<b>Organizational Structure</b>	<b>07</b>
<b>Staff Members</b>	<b>08</b>
<b>Survey: Habitations &amp; Households</b>	<b>12</b>
<b>Research &amp; Policy Studies</b>	<b>13</b>
<b>Program Unit: Training &amp; Consultations</b>	<b>14</b>
<b>Impact</b>	<b>15</b>
<b>Document Units</b>	<b>16</b>
<b>Teaching: Elective Paper</b>	<b>17</b>
<b>Our Future Plan</b>	<b>18</b>
<b>Financial Update</b>	<b>23</b>
<b>Partnering With Us</b>	<b>24</b>
<b>Consultant &amp; Internship</b>	<b>26</b>

---



# FOREWORD FROM PRINCIPAL

## Welcome to the Centre for Social Justice & Equity

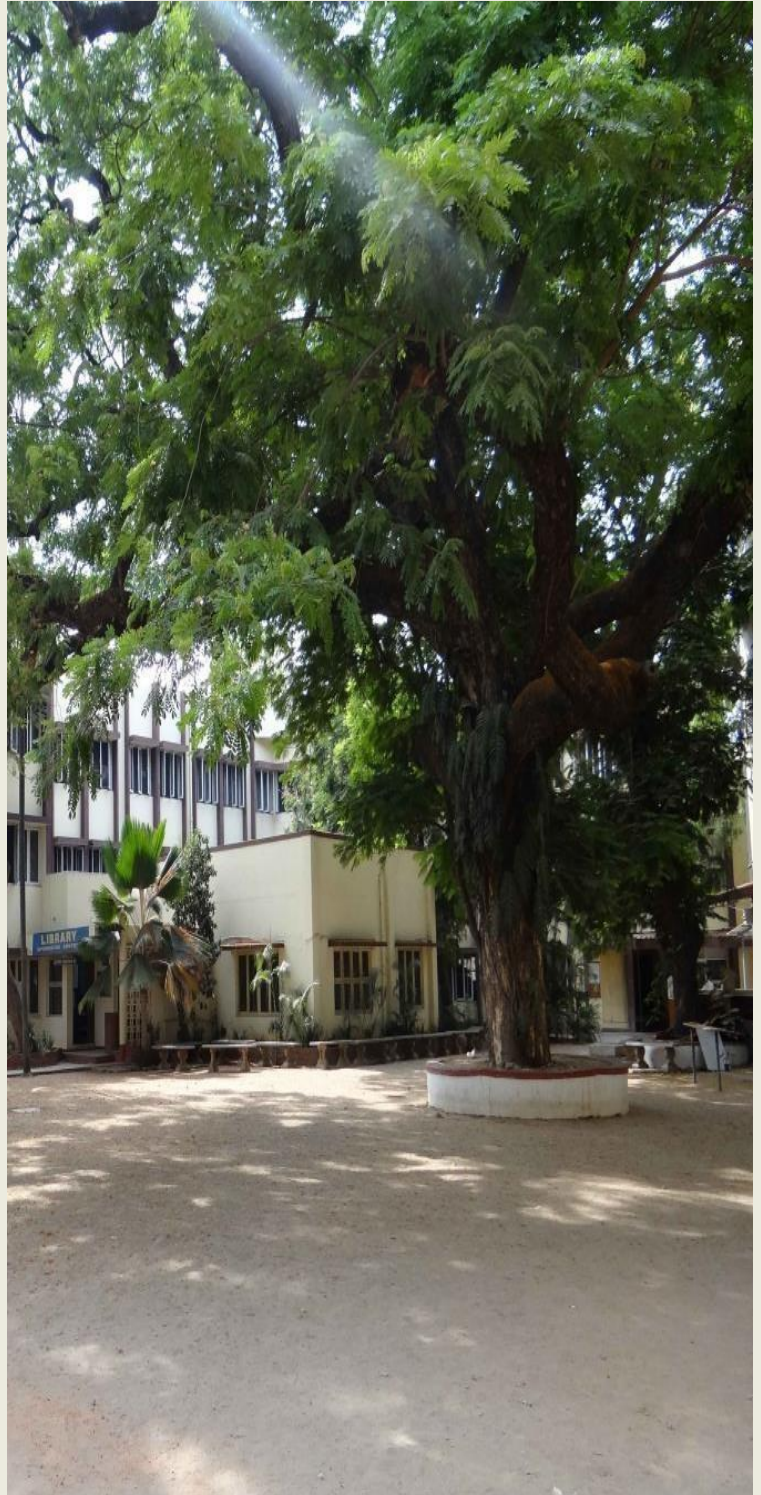
### Quarterly Report for 2023/24

Warm welcome to all members of the CSJE Advisory Council. It is indeed a privilege for MSSW to host the Centre for Social Justice and Equity supported by the Government of Tamil Nadu. This is an indicator of the positive intent of the Government to focus on social justice and also an acknowledgement of the capacity of academic institutions to contribute in this space. However, it places a great responsibility on our shoulders to ensure that we do justice to the work at hand. The centre is staffed by a set of highly committed persons who work for extended hours to cater to emerging requirements from the Government and to carry out the Centre's planned activities. As you may read in this report, the last quarter had a concentration of work pertaining to tribal communities in which mapping of particularly vulnerable tribal communities constituted a substantial portion of the effort. This is the first time that such an extensive mapping has been attempted. I do believe that the deliberations during our meeting would add great value to the work and refine our perspectives and directions..

Best wishes and regards



Dr. Raja Samuel  
Principal, MSSW



# ACKNOWLEDGEMENT

## Centre for Social Justice & Equity

We are proud that the Department of Adidraavidar and Tribal Welfare, Government of Tamil Nadu has zeroed in on Madras School of Social Work to establish a model centre that would set momentum in public policy making in Tamil Nadu.

We are very grateful to Government of Tamil Nadu for supporting the centre by sanctioning a grant-in-aid of around 20 million rupees annually for over five years. The Secretary, Adidraavidar and Tribal Welfare Department of Government of Tamil Nadu and the Directors of respective Adidraavidar and Tribal Welfare Directorates are so particular in nurturing the nascent centre with motherly tenderness that has ensured the Centre emerge steadfastly over these four months.

The Governing Board of Madras School of Social Work has extended all possible support both institutional and monetary in making the Centre functional and sustainable. Any visibility that the Centre acquired in these initial months was feasible just because of the paternal hand-holding of the Chairman, the Secretary, the Treasurer and the Principal of MSSW. It is for ever remembered the efforts our Dean put forth for ensuring a comfortable office space for the Centre with pleasant working ambience and amenities.

The Centre quiet organically gelled with the rest of the centres and departments of MSSW effortlessly. This is feasible just by the camaraderie and enthusiasm witnessed among the staff members of the Centre in engaging with the thematic of social justice on multi-disciplinary perspectives and public policy outputs.

Added to this, the CSJE has meticulously built out a network of scholars and institutions particularly some specialist working groups on citizenship journalism, tribal forest rights, and Dalit entrepreneurship. We acknowledge here their contributions, particularly Dr. Natarajah Manickam, Professor, Loyola Extension Service, Thiruvanantha puram and one of the members of our Advisory Council; and Dr. K. Regupathy, Member, The Tamil Nadu State SC / ST Commission.

The CSJE is unique among other centres of MSSW in its support for promoting social justice not only through sustained social work at the grass-root level but by exploring the uncharted terrain of social policy making.

The Centre's mandate has never been stronger, as those most marginalized and deprived in this country face even tougher times ahead. This warrants us to drive social justice to the heart of public policy making. I guess you may trace a ray of hope in the pages of this report.

*But there is so much more to be done.*

# EXECUTIVE SUMMARY

## Centre for Social Justice & Equity

### Quarterly Report for 2023/24

The Centre for Social Justice and Equity (CSJE) at the Madras School of Social Work is a new addition to the wide spectrum of innovative centres created in the School recently. The CSJE has been established under the financial grant-in-aid of the Adi dravidar and Tribal Welfare Department of Government of Tamil Nadu by its G.O No. (MS).No. 87 Adi Dravidar and Tribal Welfare (PA2) Department dated 12.07.2023

*At the CSJE, our mission is to make social justice as the crux of public policy engagements in Tamil Nadu. We've discerned that the key to unlocking game-changing policy interventions is to bring forth and echo the voices of deprived and discriminated. Because it's there that we not only uncover some of India's biggest problems, but also find the best solutions.*

Over the last 4 months, the CSJE has undertaken two research projects and Particularly Vulnerable Tribal Groups (PVTG) Habitation Survey in Tamil Nadu. It submitted a report and an Action Plan on the implementation of Forest Rights Act 2006 in Tamil Nadu to the Government of Tamil Nadu.

The CSJE has assisted the Directorate of Tribal Welfare, Government of Tamil Nadu on empanelment of Non-Governmental Organizations working with tribal populations and provided technical support to the empanelled NGOs in projects and programs design and implementation.

We have organized so far two civil society consultations and a State level convention.

The highest impact of the CSJE in these months is that of enumerating, visiting in person and documenting 2317 tribal (PVTGs) hamlets spread across 26 districts in Tamil Nadu.

## THE CSJE OVER THE PAST 4 MONTHS



Completed PVTG Survey on

**2000**

Tribal Habitations in Tamil Nadu



We have published

**2** Research papers



Advocacy and Campaign against

**1** Caste afflicted polarization in educational institutions of Tamil Nadu



**60** CSJE identification and empanelment of NGOs working among Tribal population



**1million**

Additional Fund generated

# OUR MISSION AND VALUES

**The Centre for Social Justice and Equity is an academic arm of MSSW that puts social justice at the pivotal of governance and public policy engagements.**

The CSJE's vision is for those living in the deprived and most disadvantaged communities and vulnerable conditions across Tamil Nadu to be given every opportunity to catch up with and attain their full capability. The Centre ensures this vision to life by seeking to influence the policies Government creates and the laws it makes to address the root causes of discrimination and social exclusion.

**Our mission, therefore, is to place social justice at the crux of governance and public policy making.**

## OUR VALUES

Four core values underpin the activities of the Centre:

1. To generate awareness and better understanding among key stakeholders about the concept of social justice and equity;
2. To make social justice as a major cross-cutting concern in all development interventions;
3. To cover in its scope a variety of marginalized communities and people groups;
4. Primary focus on Adi Dravidar and Tribal communities of Tamil Nadu;

## OUR OBJECTIVES

- ❖ To increase the awareness of the principal forms of exclusion in the society and promote the need for Social Justice and Equity.
- ❖ To build the capacity of Adidraavidar and Tribal communities
- ❖ To promote legal/ policy frameworks towards social Justice and Equity and carry out evidence based research and action.
- ❖ To improve economic opportunities and access to services for Adidraavidar and Tribal communities through pilot projects.
- ❖ To generate and maintain documents such as research reports, policy papers, academic literature and all relevant reports and serve as one-stop centre for all information needs pertaining to social justice and equity.



# HOW WE WORK

CSJE CONSISTS OF **THREE UNITS** STRUCTURE:

## RESEARCH



1

Research unit will carry out research activities focusing on the issues of Scheduled Caste and Scheduled Tribe population in Tamil Nadu. Primary emphasis will be on public policy studies and programs evaluation. It aims to come out periodically with research briefing papers and monographs. This unit will coordinate the Centre's various Working Groups, student internships.

## PROGRAMS & TRAINING



2

This unit organises training, sensitisation and awareness programmes for government officials, civil society organisations, students, and academicians to disseminate and mainstream the concepts of social justice and equity in governance and public policy engagements.





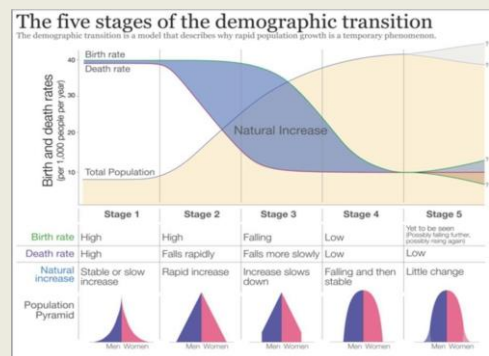
## DOCUMENTATION



we connect the ordinary common people of Tamil Nadu with the public policy making process and institutions. We make practical, implementable recommendations that we know will change lives and transform communities.

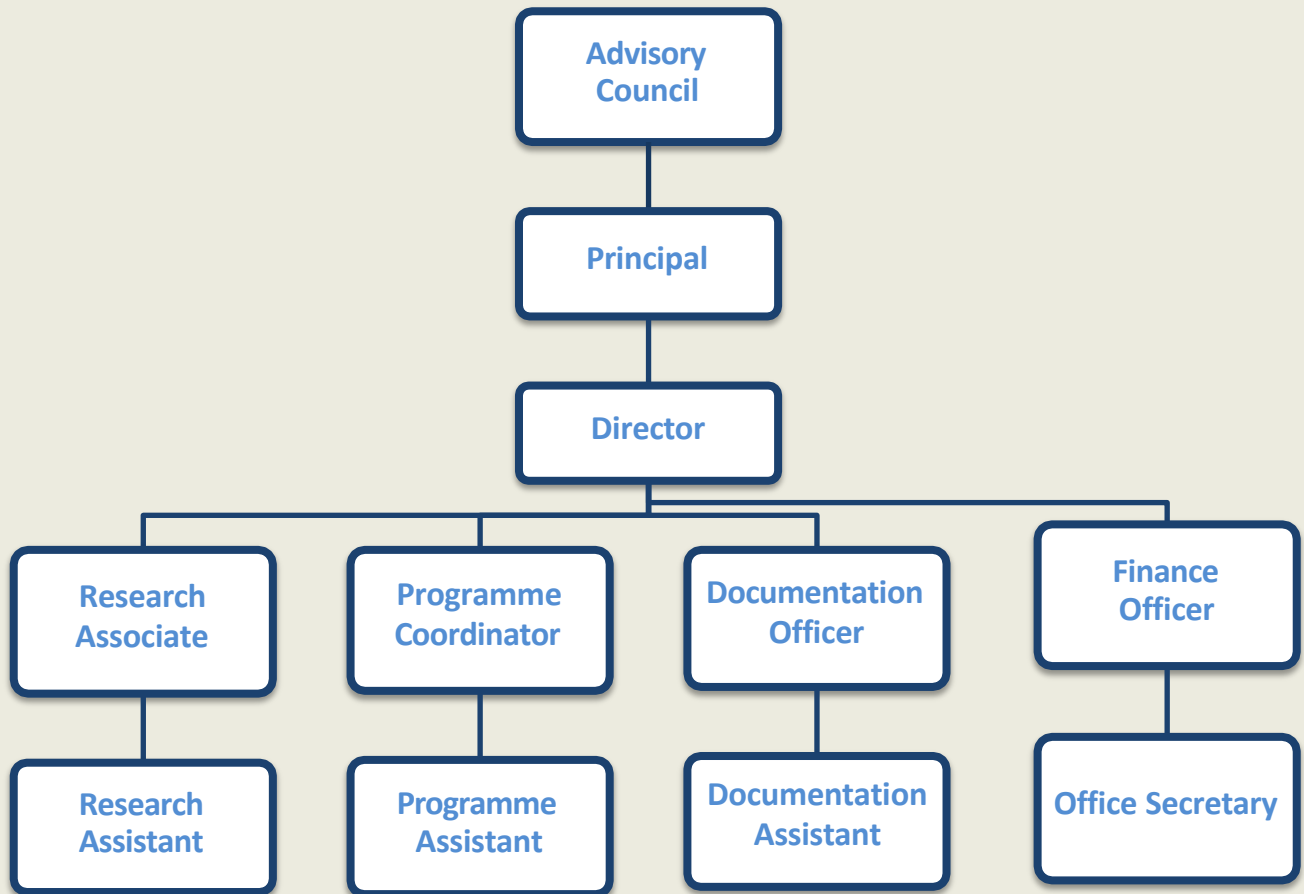
3

This unit is responsible for documenting various activities of the centre. Along with that, the documentation unit will work on creating data base and achieves on different issues pertaining to Scheduled Caste and Scheduled Tribe population, Gender and other issues of marginalisation. This unit will cater to the matters of information dissemination



# ORGANIZATIONAL STRUCTURE

The CSJ E is informed and inspired by the MSSW mission and vision; an organization of three units and nine staff ; reporting to the Principal and guided by an Advisory Council



## STAFF MEMBERS

The CSJE has staff members of multi-disciplinary background and wide range of work experience

---



**Dr. R. Pavananthi Vembulu**  
Director, CSJE, MSSW.

**Dr. R. Pavananthi Vembulu** completed his Ph.D. in European Studies from the Centre for European Studies, Jawaharlal Nehru University, New Delhi. Currently he teaches Political Science at Madurai Kamaraj University, Madurai, India. Earlier, he was at the Centre for Study of Social Exclusion and Inclusive Policy, Manonmaniam Sundaranar University, Tirunelveli. He was European Union Visiting Fellow at University of Bath, UK (2011); and German Science Foundation Visiting Fellow at Justus-Liebig University, Giessen, Germany (2012). He has published in the fields of Comparative Politics and Political Ecology.



**Mr. M. Antony Stephen,**  
Assistant Professor and Programme Co-Ordinator, MSSW.

**Mr. M. Antony Stephen** is the lead facilitator of Social Entrepreneurship Incubation centre (SEIC) in MSSW and responsible to take care of the entrepreneurship among Tribals, Marginalised Communities, Person with Disability and Artisan Sectors and build their eco system. He is heading Social Entrepreneurship Hub funded by Entrepreneurship Development Innovation Institute (EDII), Government of Tamil Nadu to promote social start up ecosystem in 60 Social Work Colleges in Tamil Nadu. He is the convenor of Consortium of Social Enterprise organisations in Tamil Nadu. He is a member of Tamil Nadu Palmyra workers Welfare Board, Government of Tamil Nadu. His research areas are Entrepreneurship ventures among migrants and marginalised communities, Social Entrepreneurship Education and Governance Entrepreneurship. He visited Cambodia, Philippines, Burma, Sri Lanka, Malaysia, Spain, Germany and Omen. He is the regular writer on issues pertaining to homeless community in leading newspapers and social media.



**Dr. S. Ilavarasi**  
Research Associate, CSJE, MSSW.

**Dr.S.Ilavarasi** has completed her master and M.Phil. degrees in women's studies. She did her doctoral research on "Women and Water: Problems and Possibilities of Water Governance - A Microstudy in Tamil Nadu" and awarded in 2019. She has two years of experience as a Research Associate at the State Institute of Rural Development and Panchayat Raj (SIRD & PR) of Government of Tamil Nadu in 2018–2020 and engaged with gender sensitization training programmes, menstrual hygiene management trainings, and sexual harassment against women. She was earlier a guest lecturer in women's studies at Bharathidasan University and University of Madras. She has published on gender and water governance and produced documentaries on the themes of marginalised communities. She has participated and organised various national and international conferences.



**Ms. P. Suseendhira,**  
Research Assistant, CSJE, MSSW.

**Ms. P. Suseendhira** has completed her Master's in Sociology at the University of Madras in 2014. Presently, she is pursuing her interdisciplinary Ph.D. programme in sociology and criminology. She has teaching experience as a guest lecturer and Assistant Professor at Chennai Dr.Ambedkar Law College, PSG College of Arts and Science, Coimbatore. Before joining the CSJE, she worked as a Research Associate at Maharashtra National Law University, Nagpur. She has worked on different research projects on the themes of criminology, victimology, sociology, and gender studies. Her significant projects are the impact of violent crimes in Nagpur City, the social exclusion of manual scavenging communities, and gender dimensions of the urban labour market. She has published articles on different subjects in the vernacular magazines. She has also participated in various national and international conferences and presented research papers.





**Ms. M. Priyachitra,**  
**Programme Assistant. CSJE, MSSW.**

**Ms. M.Priyachitra** has completed in Master's in History, M.Phil. in Archaeology at University of Madras. Presently, she is pursuing her interdisciplinary research in Women's Studies. She was the research fellow of ICSSR fellowship in the year 2018 – 2020. She has worked in different research projects in associated with ICSSR, Centre for Developmental Studies. Her noteworthy projects were the Educational Challenges of Scheduled Castes in Tamil Nadu and Tamil Nadu Migration Survey. She has also organized and participated in various national and international conferences and presented research papers.



**Ms. Niranjana**  
**Accountant, CSJE, MSSW.**

**Ms. Niranjana** is a B.Com graduate and has a wide range of work experience in the private sectors and private limited companies. She has a rich experience accounting and auditing. She looks after the financial matters of the Centre.



**Mr. Ramkumar**  
Documentation officer, CSJE, MSSW.

**Mr. Ramkumar** holds a post-graduate degree in Social Work from Tata Institute of Social Science, Mumbai. He teaches Social Work at the MSSW.



**Mr. Sankara Pandi**  
Assistant Documentation officer, CSJE, MSSW.

**Ms. Sankara Pandi** has a degree in Economics and Population Studies from Indian Institute of Population Studies, Mumbai. He teaches Development Economics at MSSW.

---

## SURVEY: HABITATION & HOUSEHOLD

The CSJE is swiftly catapulted into a nodal agency to design and carry out household and habitation survey

Designed, carried out and completed a Baseline Habitation Survey of Particularly Vulnerable Tribal Groups (PVTGs) communities across 13 districts of Tamil Nadu in the Month of December 2023.

Designed a "Baseline Survey for collecting information of Puthirai Vannar Community in Tamil Nadu" submitted for bidding to the Department of Tribal Welfare, Government of Tamil Nadu.

Designed a "Baseline Survey for collecting information of Scheduled Tribes Population in Tamil Nadu" submitted for funding to the Directorate of Tribal Welfare , Government of Tamil Nadu.





## RESEARCH & POLICY STUDIES

The CSJE has undertaken a series of impact appraisal studies on State policies and development programs

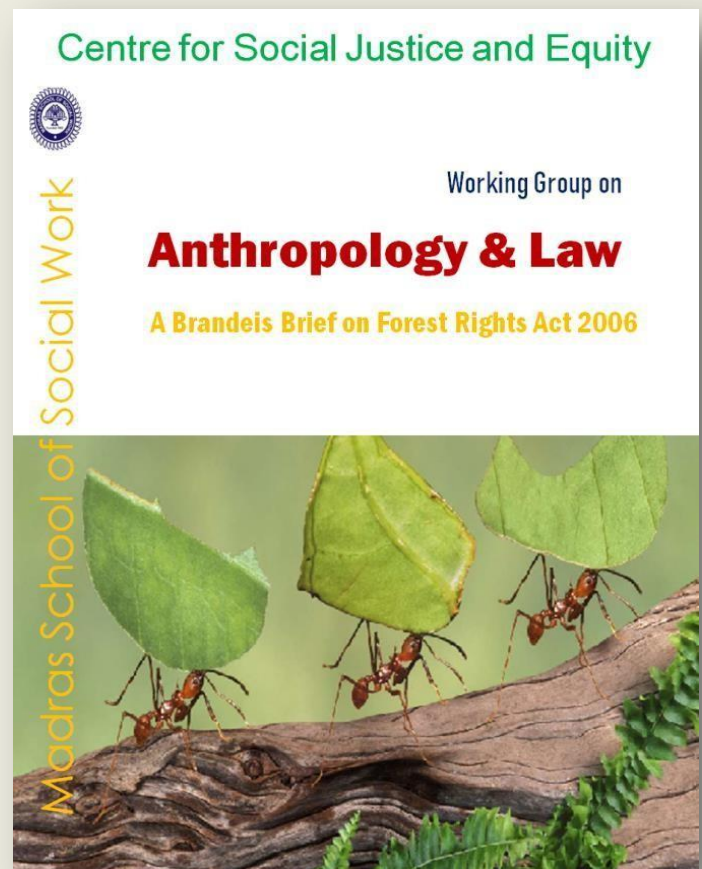
Carried out a pilot study on the implementation of Forest Rights Act 2006 at Erode, Dindigul, The Nilgiris and Coimbatore in November and December 2023.

A Study on Population Projection of Greater Chennai 2026 – a study undertaken for Chennai Metropolitan Development Authority (CMDA) as part of preparation of Master Plan 2026

Research project proposal on „Development and Distributive Politics in India: A Comparative Study of Scheduled Castes and Scheduled Tribes Sub-Plan of Andhra Pradesh, Karnataka, Kerala and Tamil Nadu“ submitted for funding to Indian Council of Social Science Research (ICSSR)

Research project proposal on „Invisible Margins: A Baseline Study of Panniandi Community in Tamil Nadu“ submitted for funding to Indian Council of Social Science Research (ICSSR).

### WORKING PAPER



This particular working paper is of the nature of a “Brandeis Brief” that would particularly endeavor to compile series of ethnographic and legal briefs on the rights and entitlements of tribal population of Tamil Nadu; that may help and assist the State Government to implement efficiently the Forest Rights Act 2006.



# PROGRAM UNIT: TRAINING & CONSULTATIONS

**The Program Unit of CSJE conducted a series of trainings and consultations for civil society organizations**

Assisted the Directorate of Tribal Welfare in empanelling NGOs working on tribal affairs.

Organised one day Training Programme for the empanelled NGOs of the Directorate of Tribal Welfare Department.

Organised one Day Consultation meeting with Civil Society Organization in Chennai and Trichy.

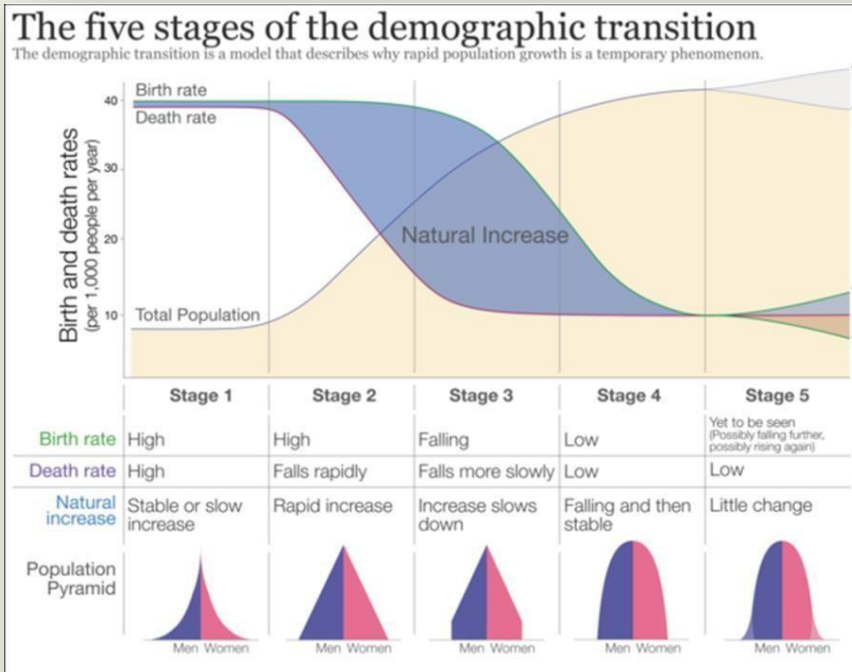
Organised a seminar on "Understanding Social Justice and Equity: A Socio – Political Perspective." Special address delivered by Ms. Arulmozhi Advocate and Social Activist and Justice D. Hariparandhaman, Former Judge, Madras High Court.

Under Weekly Lecture Series a presentation was carried out by Mr. Sankarapandi, Documentation Assistant of CSJE on "Charting the Unknown: Population Projection Methods for Targeted Tribal Census"



# DOCUMENTATION UNIT

The CSJE started meticulously documenting both quantitative and qualitative data for informed policy making



Population Projection for Greater Chennai 2026

Undertaken the population projection for Greater Chennai as part of Chennai Metropolitan Development Authority Master Plan 2026

Population Projection of Tribal Communities of Tamil Nadu – Post Census 2011

Undertaken the population projection for tribal communities in Tamil Nadu.

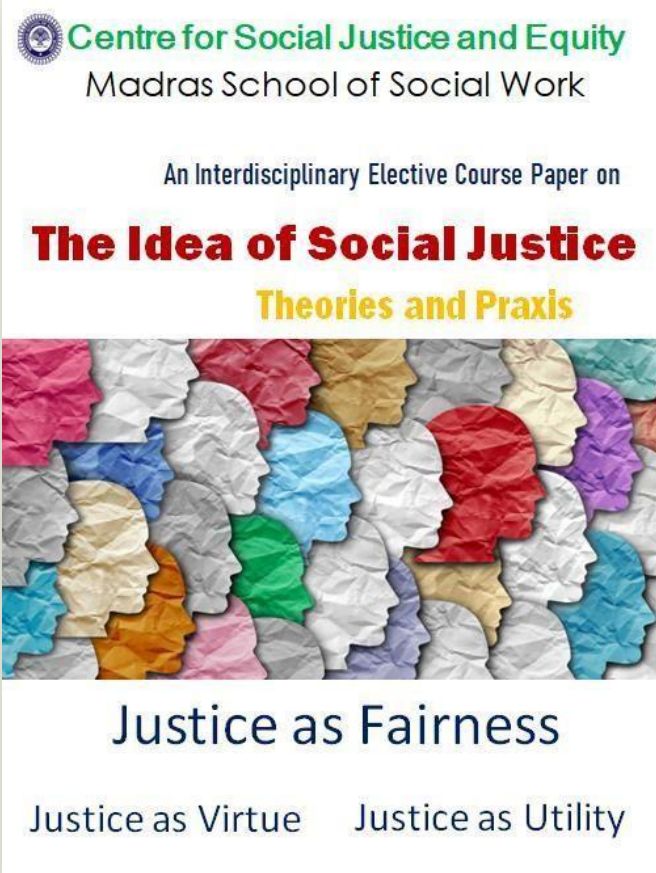
## Summary of Tribal Population in Tamil Nadu - Census 2011

- a. In terms of proportion, Scheduled Tribe population represents 1.1% of the total population, with a 0.06% increase over the last decade. The highest proportion is in The Nilgiris (4.5%), and the lowest is in Karur (0.05%).
- b. The absolute number of Scheduled Tribes has increased by 1.4 lakhs, reflecting a 22.0% decadal growth.
- c. Salem records the highest number of Scheduled Tribes (1.2 lakhs), while Karur has the lowest (575).
- d. Regarding gender composition, there are 4.0 lakhs male Scheduled Tribes (3.3 lakhs in rural areas and 0.7 lakhs in urban areas) and 3.9 lakhs female Scheduled Tribes (3.3 lakhs in rural areas and 0.6 lakhs in urban areas).



# TEACHING: ELECTIVE PAPER

The CSJE intends to offer an elective paper on Social Justice to Post-Graduate students of MSSW from 2024-2025 academic year onwards.



The cover features the logo of the Centre for Social Justice and Equity, Madras School of Social Work. The title 'The Idea of Social Justice' is in large red font, with 'Theories and Praxis' in yellow below it. A central image shows a collage of colorful, crumpled paper silhouettes of human heads. At the bottom, the text 'Justice as Fairness' is prominent, with 'Justice as Virtue' and 'Justice as Utility' listed below it.

**Centre for Social Justice and Equity**  
Madras School of Social Work

An Interdisciplinary Elective Course Paper on

## The Idea of Social Justice

### Theories and Praxis

## Justice as Fairness

Justice as Virtue    Justice as Utility

Curricular Design	
<b>Block 1</b>	<b>Introduction</b>
Module 1	What is Justice?
Module 2	Procedural, Substantive & Distributive Justice
Module 3	Social Justice: Nature & Scope
<b>Block 2</b>	<b>Theories of Social Justice</b>
Module 4	Justice as Virtue
Module 5	Justice as Utility
Module 6	Justice as Fairness
<b>Block 3</b>	<b>Social Justice &amp; Social Movement</b>
Module 7	Anti-colonial & Anti-Racial Movements
Module 8	Dalits & Adivasi Movements
Module 9	Feminist & New Social Movements
<b>Block 4</b>	<b>Social Justice &amp; Social Policy</b>
Module 10	Poverty & Social Exclusion
Module 11	Deprivation & Discrimination
Module 12	Rights & Entitlements
<b>Block 5</b>	<b>Social Justice &amp; Social Work</b>
Module 13	Social Participation
Module 14	Social Change: Individual & Institutional
Module 15	Social Empowerment

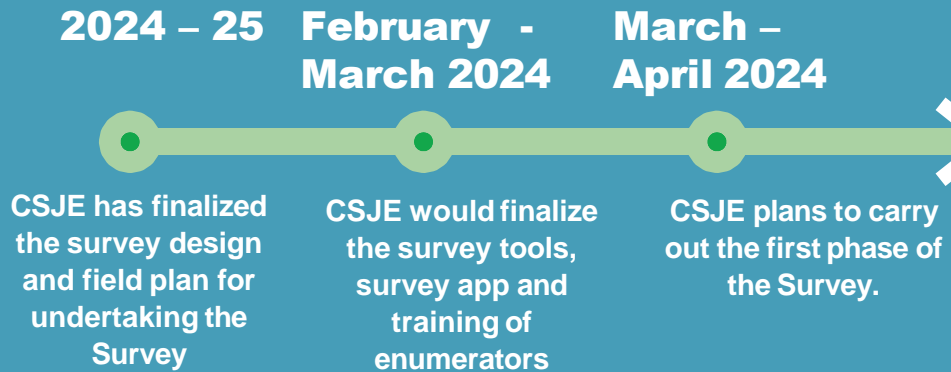
**POST GRADUATE PROGRAMS IN**  
Development Studies  
Social Entrepreneurship  
Social Work

**Duration of the Course: 12 Weeks**  
**Number of Modules: 15**  
**Total Credits: 3**

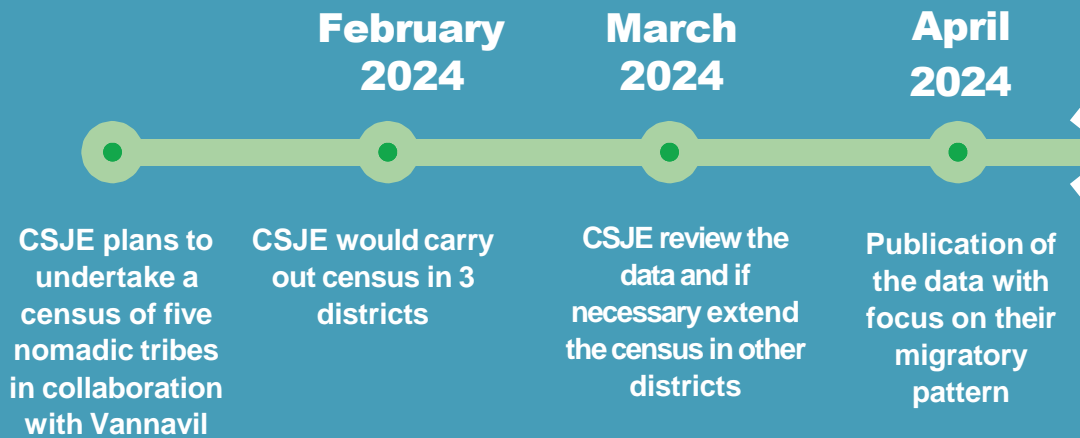
# OUR FUTURE PLAN

## SURVEY & CENSUS UNDER DESIGN

### SCHEDULED TRIBES HOUSE HOLD SURVEY 2024



### NOMADIC TRIBES CENSUS 2024





# OUR FUTURE PLAN

RESEARCH & POLICY STUDIES TO BE UNDERTAKEN

## SC & ST SUB-PLAN : EMERGING LEGAL REGIEMS



**2024 – 25**

CSJE plans to undertake a comparative study of SC / ST Sub-Plan in Andhra, Karnataka, Kerala and Tamilnadu

**February - April 2024**

CSJ E concentrates on the collection of secondary data in these select States.

**May - July 2024**

Starts writing a monograph on the theme and submit the manuscript for publication

## PROMOTING TRIBAL ENTREPERENUERSHIP



**February 2024**

CSJE plans to undertake the study in collaboration with Department of Social Entrepreneurship

**March 2024**

A draft policy proposal to promote tribal entrepreneurship

**April 2024**

Organization of Tribal Mela promoting producers and consumers linkages and networks

# OUR FUTURE PLAN

RESEARCH & POLICY STUDIES TO BE UNDERTAKEN

## CASTE ATROCITIES AGAINST SC / ST IN TN



**2024 -25**

CSJE undertakes this study in collaboration with the Tamil Nadu State SC / ST Commission

**February - 2024**

Collating and cataloguing the available data with the Commission

**March 2024**

CSJE lends expertise to create an achieve on caste atrocities at the Commission.

## CASTE AFFLICTED POLARIZATION IN SCHOOLS



**February 2024**

CSJE surveys over 100 schools in Tirunelveli and Thoothukudi districts

**March 2024**

CSJE plans to organize a consultation with educational administrators and finalize the survey tools.

CSJE would carry out the field survey in the selected schools in these two districts

**April 2024**

Undertaking advocacy and media campaign and cross-party awareness and opinion on the raising menace of caste polarization

# OUR FUTURE PLAN

RESEARCH & POLICY STUDIES TO BE UNDERTAKEN

## SOCIO – ECONOMIC CONDITIONS OF PANNIANDI COMMUNITY IN TN



2024–25

The “Panniandi” Community is the most vulnerable scheduled caste community in Tamil Nadu. Due to the intra migration and occupational shifts there is lack in accounting them in TN. This will be the very first study in TN to address their socio – economic conditions.

February - April 2024

Data Collection and documenting the existing primary social problems of “Panniandi” community

May – July 2024

Action plan for exclusive welfare programmes and social schemes and policy development will be prepared by CSJE

## ISSUES AND CHALLENGES: COMBATING MARKET TECHNIQUES OF “SEEMAR PUL” PRODUCTS AMONG TRIBAL WOMEN IN SATHYAMANGALAM HILLS



February 2024

The tribal women have the inherent Indigenous technical knowledge to utilize the forest products for their livelihood needs. One such product is “Seemar Pul” in the Sathyamangalam Hills. The tribal women of that region largely depend on these MFPs for economic development.

CSJE researchers analyzed the issues and challenges in accessing the market to selling the products of “Semmar Pul” of the Tribal Women.

March 2024

Providing the trainings to use the modern technologies in production, create awareness on market techniques and networking the various stakeholders in the market includes, cooperative societies and other relevant private agencies.

April 2024

Providing supportive measures to social entrepreneurial activities and developing an E-Commerce system for their economic empowerment. So then the tribal women will be empowered socially.

# OUR FUTURE PLAN

## PROGRAMS & TRAINING

### A TRAINING WORKSHOP FOR SC / ST & WOMEN STUDENTS ON CITIZEN JOURNALISM



**2024 -25**

CSJE plans to organize a training workshop on citizen journalism in collaboration with Asian College of Journalism

**February - 2024**

Preparatory works on curriculum and student selection

**March 2024**

Conducting workshop at Chennai



## DOCUMENTATION

### A DOCUMENTARY FILM PRODUCTION ON NOMADIC TRIBES IN TN



**February 2024**

CSJE collaborates with the department of Tamil, American College, Madurai to produce a documentary film on nomadic tribes of Tamil Nadu

**March 2024**

CSJE would commence the filming by travelling to the hamlets of the tribal groups.

Post production works including editing



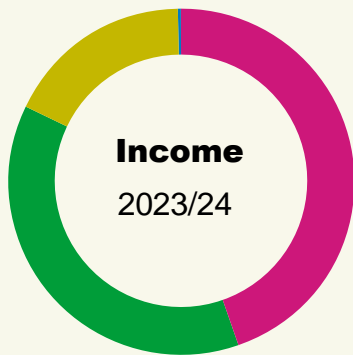


# FINANCIAL UPDATE

## 2023/24 IN NUMBERS...

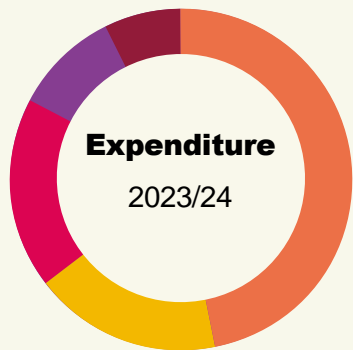
In 2023/24 financial year the CSJE received contributions of Rs. 80,60000 from Adi Dravidar and Tribal Welfare Department of Government of Tamil Nadu. This represents a 50% of the annual grant-in-aid of Rs. 1,59,43,000. Additionally we received Rs. 9,31,825 from the Directorate of Tribal Welfare, Govt of TN for carrying out PVTGs Survey and pilot study on FRA 2006

Our expenditure in these four months is around 66% of the gross fund received so far. The major expenditure understandably is of the nature of establishing a proper office space for CSJE at MSSW with working amenities. In the case of PVTG Survey 100% of the fund been utilized and 25% of the allocated fund is utilized.



**ADI DRAVIDAR & TRIBAL WELFARE DEPARTMENT**  
**Rs. 80,60,000 (90%)**

**DIRECTORATE OF TRIBAL WELFARE**  
**Rs. 9,31,825 (10%)**



**OFFICE ESTABLISHMENT**  
**Rs. 13,15,856 (15%)**

A separate office space for CSJE with all working amenities was established at MSSW premise.

**DOCUMENTATION**  
**Rs. 3,5,000 (4%)**

Expenditure incurred on producing a documentary film on Momadic Tribes of Tamil Nadu and an interactive website for CSJE.

**PERSONNEL COSTS**  
**Rs. 23,60,000 (26%)**

Four months salary for the staff of CSJE

**BOOKS & JOURNALS**  
**Rs. 3,00,000 (3%)**

The CSJE is in the process of establishing a reference library on the thematics of social justice and equity.

**ADMINISTRATIVE COSTS**  
**Rs. 5,63,000 (6%)**

Under this heading of the grant 80% has been utilized of which the purchase of computers, printers and other electronic gadgets assumed priority.

**OVERHEAD COST**  
**Rs. 1,83,497 (2%)**

Expenditure incurred under this heading for the inaugural function and other miscellaneous expenditures

The CSJE is an independent, not-for-profit academic organization. We are reliant on the grant-in-aid of the Government of Tamil Nadu.

Our views and policy recommendations are based purely on our own research, and we retain all editorial rights to our work. We undertake strict due diligence to ensure our independence is not compromised by any source of funding.

### RESEARCH & POLICY

**Rs. 3,29,500 (4%)**

A pilot study was carried out on the implementation of FRA 2006

### PROGRAM & TRAINING

**Rs. 88,701 (1%)**

A series of training and consultation workshops were conducted for civil society organizations.

### SURVEY

**Rs. 4,42,719 (5%)**

The CSJE has completed the PVTGs Survey.

# PARTNERING WITH US

The CSJE has collaborated with wide spectrum of both government and Civil Society institutions.

## TRIBAL WELFARE

Govt of TN

TRIBAL WELFARE DEPARTMENT - GOVERNMENT OF TAMILNADU  
பழங்குடியினர் நலத்துறை - தமிழ்நாடு அரசு



The CSJE undertook Particularly Vulnerable Tribal Groups Habitation Survey 2023 for Directorate of Tribal Welfare, Govt of Tamilnadu. Further, for the Directorate the CSJE conducts a research study on the implementation of Forest Rights Act 2006 and in the process of preparing Action Plan for FRA

## VANAVILTRUST

Nagapatinam



The CSJE works with Vannavil to undertake household survey of nomadic tribes of Tamil Nadu.

## ASIAN COLLEGE OF JOURNALISM

Chennai



The CSJE plans to organize a workshop for SC/ST students on Citizen Journalism in collaboration with Asian College of Journalism.

## CENTRE FOR CHILD RIGHTS & DEVELOPMENT

Chennai



THE CSJE along with CCRD conducted a State level consultation on the prevalence of drug abuse among children in Tamil Nadu.

## TAMIL NADU STATE COMMISSION FOR SC /ST



The CSJE collaborates with the Commission to document and develop an archival source for the caste atrocities in Tamil Nadu

## DERPARTMENT OF TAMIL

Madurai



THE AMERICAN COLLEGE

Collaborating with the Department of Tamil, The American College, Madurai the CSJE plans to make a documentary film on Nomadic Tribes of Tamil Nadu..

## DEPARTMENT OF

## SOCIAL ENTREPRENEURSHIP

Chennai



MADRAS SCHOOL OF SOCIAL WORK

(An Autonomous Institution Accredited by SAAC With 'A' Grade)

THE CSJE and the Department of Social Entrepreneurship at MSSW plan to undertake a feasibility study on Korankombu Wild Coffee and promoting tribal entrepreneurship.

---

## CONSULTANTS & INTERNSHIP



**Ms. Pragati K.B.**  
**CSJE Consultant**  
**Citizen Journalism**  
**Workshop**

---

Pragati holds a law degree from the National Law University, Jodhpur. Subsequently she completed her PG Diploma in Asian College of Journalism and her post-graduate degree in social anthropology from University of Oxford. She was earlier an editorial staff of The Hindu and is now a freelance journalist with The Caravan, The Wire and others. She writes about the political economy at the intersections of caste, gender, labour and culture.



**Mr. Vishal Saravanan**  
**CSJE Student Intern**

---

Vishal is our student intern in December 2023. He is a first year student of Symbiosis Law University, Hyderabad Campus. He worked with us on the theme of Legal Regimes of Forest Governance in India





**CENTRE FOR SOCIAL JUSTICE AND EQUITY**  
**MADRAS SCHOOL OF SOCIAL WORK**  
32, CASA MAJOR ROAD  
EGMORE, CHENNAI – 600 008  
Tel: 044-28194566  
[Email:principal@mssw.in](mailto:principal@mssw.in)  
[www.mssw.in](http://www.mssw.in)